

Our God

Words and Music by
Matt Redman, Jonas Myrin,
Chris Tomlin and Jesse Reeves

♩ = 105

INTRO

Dm/F

B \flat /F

F



4 C^{sus}/F

Dm/F

B \flat /F



VERSE 1

7 F

C^{sus}/F

Dm/F

B \flat /F



1. Wa-ter You turned _ in - to wine, .

10 F

Dm/F

B \flat /F

F

Gm⁷



_ o-pened the eyes _ of the blind; _ There's no one like You, _

VERSE 2

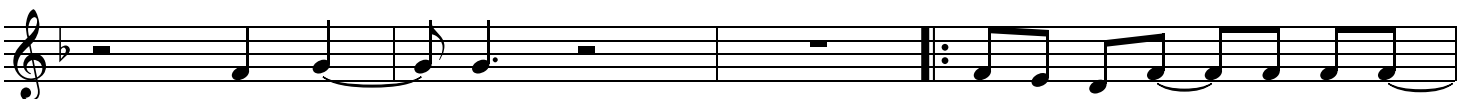
14

C^{sus}

C

Dm

B \flat



none like ____ You.

2. In - to the dark - ness You shine, .

18 F Dm B \flat F Gm⁷

— out of the ash - es, we rise; — There's no one like You, —

CHORUS 1

22 C^{sus} C Dm

none like — You. Our God is great - er,

26 B \flat F C^{sus}

our God is strong - er; God, You are high - er than an - y oth - er.

29 Dm B \flat F

Our God is heal - er, awe-some in pow - er, our — God, — our — God. .

32 1. INSTRUMENTAL 2. C^{sus} Dm B \flat F C^{sus} C^{sus} D.S.

38 3. INSTRUMENTAL C^{sus} Dm B \flat F

42 C^{sus} Dm B \flat

BRIDGE 1

45 F C^{sus} Dm

Musical staff for measure 45, starting with a treble clef and a key signature of one flat. The melody consists of eighth notes: G4, A4, B4, C5, B4, A4, G4. The accompaniment consists of eighth notes: G3, A3, B3, C4, B3, A3, G3. The measure ends with a double bar line.

And if our God is for us

48 B \flat F C^{sus}

Musical staff for measure 48, starting with a treble clef and a key signature of one flat. The melody consists of eighth notes: G4, A4, B4, C5, B4, A4, G4. The accompaniment consists of eighth notes: G3, A3, B3, C4, B3, A3, G3. The measure ends with a double bar line.

then who could ev - er stop us, and if our God is with us then what could stand a - gainst? .

51 Dm B \flat F

Musical staff for measure 51, starting with a treble clef and a key signature of one flat. The melody consists of eighth notes: G4, A4, B4, C5, B4, A4, G4. The accompaniment consists of eighth notes: G3, A3, B3, C4, B3, A3, G3. The measure ends with a double bar line.

— And if our God is for us then who could ev - er stop us, and if our God is with us

54 C^{sus} Dm B \flat F/A

Musical staff for measure 54, starting with a treble clef and a key signature of one flat. The melody consists of eighth notes: G4, A4, B4, C5, B4, A4, G4. The accompaniment consists of eighth notes: G3, A3, B3, C4, B3, A3, G3. The measure ends with a double bar line.

then what could stand a - gainst? —

58 C^{sus} Dm B \flat F/A C^{sus}

Musical staff for measure 58, starting with a treble clef and a key signature of one flat. The melody consists of eighth notes: G4, A4, B4, C5, B4, A4, G4. The accompaniment consists of eighth notes: G3, A3, B3, C4, B3, A3, G3. The measure ends with a double bar line.

What could stand a - gainst? —

CHORUS 2

63 Dm¹¹ B \flat ² F

Musical staff for measure 63, starting with a treble clef and a key signature of one flat. The melody consists of eighth notes: G4, A4, B4, C5, B4, A4, G4. The accompaniment consists of eighth notes: G3, A3, B3, C4, B3, A3, G3. The measure ends with a double bar line.

Our God is great - er, our God is strong - er; God, You are high - er than an -

66 C/E Dm¹¹ B \flat ²

- y oth - er. Our God is heal - er, awe-some in pow - er, our _ God, .

69 F C^{sus} Dm¹¹ **BRIDGE 2**

_ our _ God. _ And if our God is for us

72 B \flat ² F C/E

then who could ev - er stop us, and if our God is with us then what could stand a - gainst? .

75 Dm¹¹ B \flat ² F

_ And if our God is for us then who could ev - er stop us, and if our God is with us

78 C^{sus} Dm B \flat F/A

then what could stand a - gainst? _

82 C^{sus} Dm B \flat F/A C^{sus}

Then what could stand a - gainst? _____

CHORUS 2

88 Dm¹¹ B \flat ² F

Our God is great - er, our God is strong - er; God, You are high - er than an -

91 C/E Dm¹¹

- y oth - er. Our God is heal - er,

93 Bb² F C^{SUS}

awe-some in pow - er, our _ God, _ our _ God. _